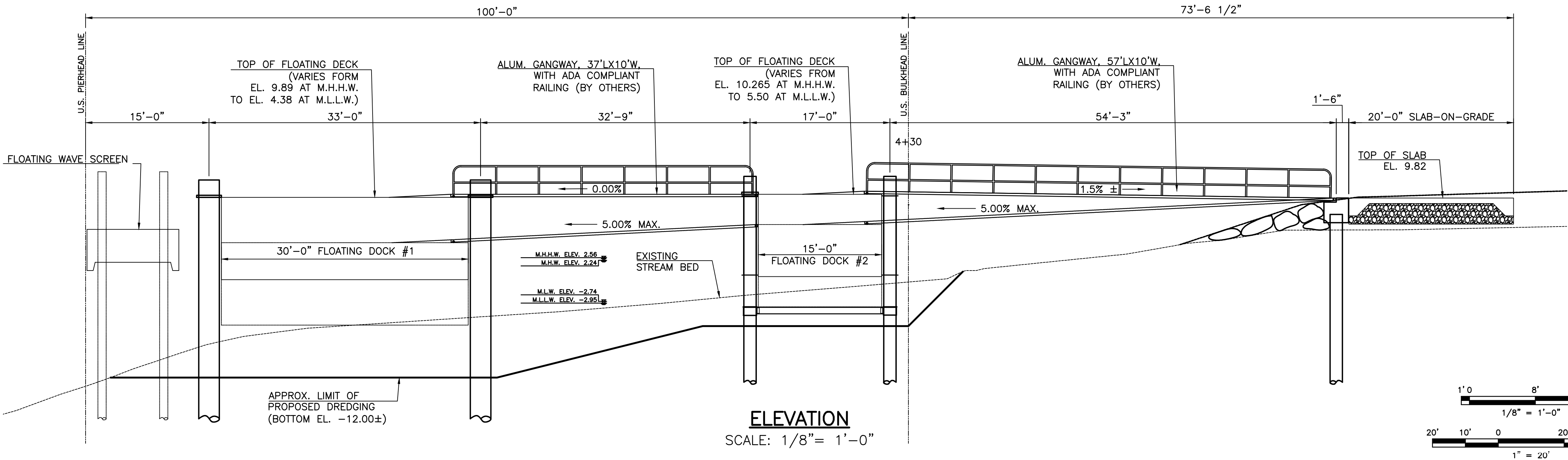
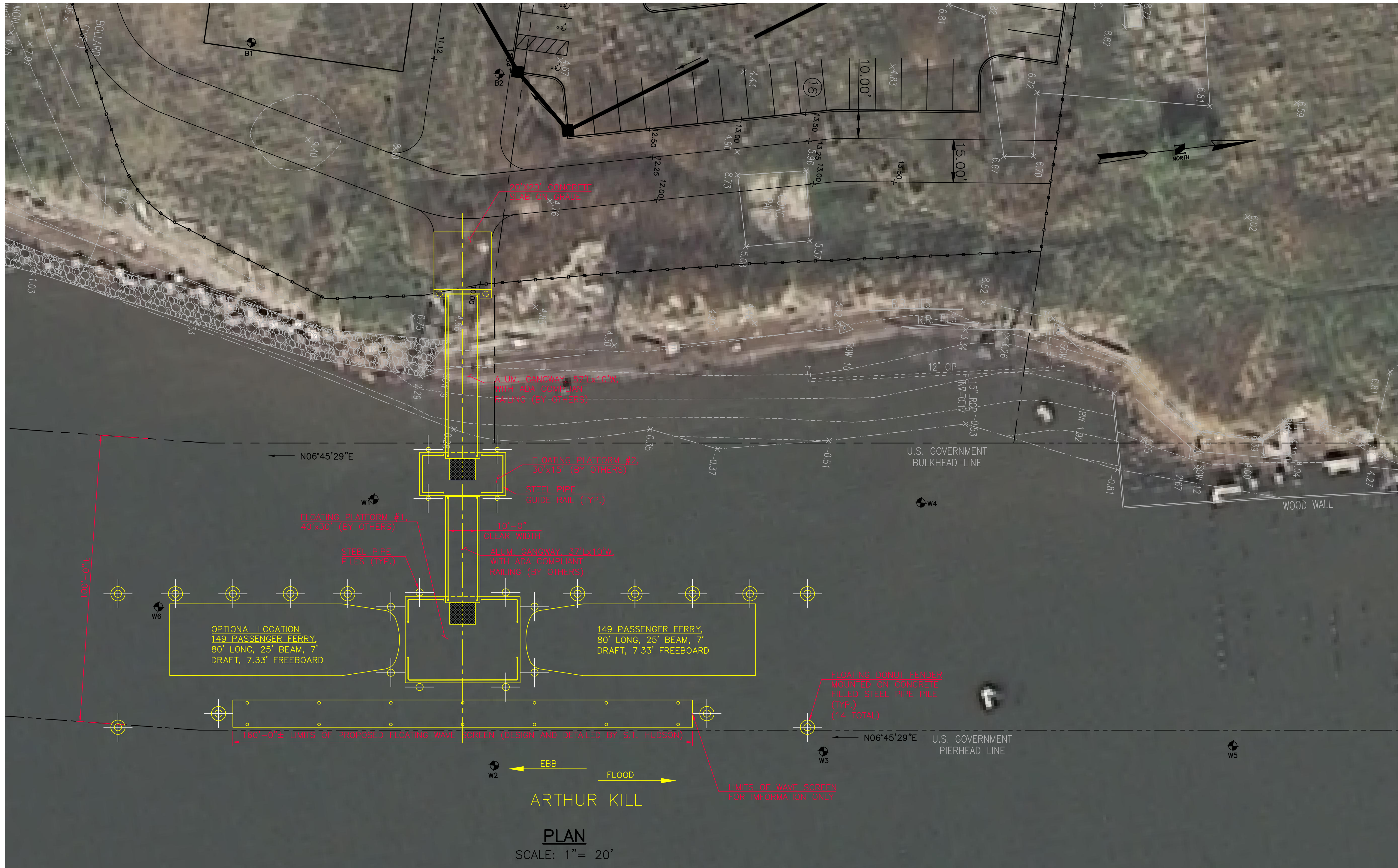


COPYRIGHT 2012, T&M ASSOCIATES - ALL RIGHTS RESERVED
THE COPYING OR REUSE OF THIS DOCUMENT OR PORTIONS THEREOF FOR OTHER THAN THE ORIGINAL PROJECT OR
THE PURPOSE ORIGINALLY INTENDED WITHOUT THE WRITTEN PERMISSION OF T&M ASSOCIATES IS PROHIBITED.



SHEET INDEX—STRUCTURAL DRAWINGS		
SHEET	STRUCTURAL DRAWING NO.	DESCRIPTION
17	GPE	GENERAL PLAN AND ELEVATION
18	SN	STRUCTURAL NOTES
19-21	SD-1 TO SD-3	STRUCTURAL DETAILS

TIDAL INFORMATION:	
(NOAA STATION: BERGEN POINT WEST REACH, NY)	
DATUM : NAVD 1988	
MHHW = 2.56	
MHW = 2.24	
MTL = -0.25	
MLW = -2.74	
MLLW = -2.95	

JAMES A. BUCZEK, P.E.	
LICENSED PROFESSIONAL LAND SURVEYOR STATE OF NEW JERSEY LICENSE No. 6E45122	DATE

NO.		DATE		REVISIONS		BY CHECKED	
BOROUGH OF CARTERET							
PROPOSED CARTERET FERRY TERMINAL BLOCK 304 LOTS 2.01 AND 2.02 BOROUGH OF CARTERET, MIDDLESEX COUNTY, NEW JERSEY							
GENERAL PLAN AND ELEVATION							
<div><div><div>T&M</div><div>ASSOCIATES</div><div>11 TINDALL ROAD</div><div>MIDDLETOWN, NJ 07748</div><div>TEL 732-671-6400</div><div>FAX 732-671-7365</div><div>NEW JERSEY BOARD OF PROFESSIONAL ENGINEERS AND LAND SURVEYORS</div><div>CERTIFICATE OF AUTHORIZATION 246427987500</div></div><div><div>DONALD J. NORBUT, P.E.</div><div>LICENSED PROFESSIONAL ENGINEER</div><div>STATE OF NEW JERSEY LICENSE No. GE34412</div><div>DATE</div></div></div>				<div>DRAWING GPE-1</div> <div>SHEET</div> <div>17 OF X</div>			
NEW JERSEY BOARD OF PROFESSIONAL ENGINEERS AND LAND SURVEYORS CERTIFICATE OF AUTHORIZATION 246427987500		DESIGNED BY PROJECT NO. CART-02200		DRAWN BY CADD FILE CART02200_SPH017_ST_SPE_PRESENTATION BOARD.dwg		CHECKED BY FIELD BK. # DATE	
		HG		HG		DRF	
		CART-02200		CART02200_SPH017_ST_SPE_PRESENTATION BOARD.dwg		--	

FILE NAME: C:\A\Cart\02200\Bldg\Bldg_CART02200_SPH017_ST_SPE_PRESENTATION BOARD.dwg
PLOT DATE: Mar 16, 2015 12:14pm